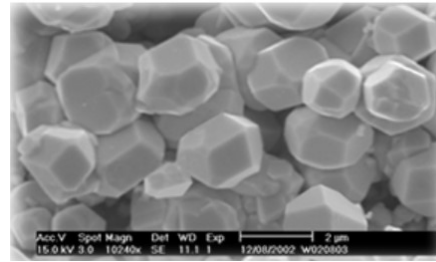


## Wolframmetallpulver



Qualität:

1.FW-1:  $W \geq 99.95\%$

2.FW-2:  $W \geq 99.9\%$

Eigenschaften:

Typ (µm)	Fsss (g/cm <sup>3</sup> )	Scott Density (%)	Oxygen content
TM-06	0.6-0.8	1.4-2.2	0.5
TM-08	0.81-1.0	1.7-2.5	0.4
TM-10	1.01-1.5	2.0-2.8	0.3
TM-15	1.51-2.0	2.2-3.0	0.3
TM-20	2.01-3.0	2.6-3.5	0.25
TM-30	3.01-4.0	3.2-4.2	0.25
TM-40	4.01-5.5	3.8-4.8	0.25
TM-55	5.51-7.0	4.0-5.2	0.2
TM-70	7.01-15.0	4.2-5.5	0.2
TM-150	>15.0	4.5-6.5	0.1

Verunreinigungsgehalt:

Grade		FW-1	FW-2
Verunreinigungen (%max)	Fe	0.0050	0.0300
	Si	0.0020	0.0050
	Ca	0.0020	0.0040
	Al	0.0010	0.0040
	Mn	0.0010	0.0020
	Mg	0.0010	0.0040
	Ni	0.0030	0.0040
	Sb	0.0010	0.0010
	Cr	0.0010	0.0040
	As	0.0010	0.0020
	Pb	0.0001	0.0005
	Bi	0.0001	0.0005
	Sn	0.0003	0.0005
	Cu	0.0007	0.0010
	Mo	0.0050	0.0100
	K	0.0015	0.0015
Na	0.0015	0.0015	
S	0.0010	0.0020	
P	0.0010	0.0040	